



Selected projects / 2018

We design for You.

Tell us Your vision of space
and we will design it.
Together.

I`m landscape architect working more than 20 years in my profession.

In year of 1996 I have finished landscape architecture on Warsaw University of Life Sciences (polish shortcut: SGGW).

Since 1998 I realize my projects in Poland and in Iraq (between 2007 and 2009), where I was one of first landscape architects making projects after Iraq civil war (please look at: <http://www.arlan.pl>). You can find there short articles (only in polish language at this moment) about 12,5 hectares park made from „zero” on desert near by Kirkuk City (contract with Governor of Kirkuk Province) based on my professional landscape architects team. It was also a little help from US ARMY Provincial Reconstruction Team. All of this was an amazing project.

Other amazing experience was cooperation with John Brookes, one of the most famous english landscape designers. We`ve been working for 2 years on the restoration of one of most beautiful polish monumental parks (12 hectares) in Kikol Community, near by Toruń City.



Jarek Malecki
landscape architect

co-funder & managing director
of ARLAN Landscape Architects

ARLAN /
selected projects /

/ Central Railway Station in Bydgoszcz City / Poland

project of total rebuilding / total capital budget near 50 million EUR / realization 2013-2015

ARLAN Landscape Architects was subcontractor of main architecture office (General Contractor);

Jarek Malecki was chief of the team responsible for whole project of landscape architecture (including plants assortment, items of equipment, lighting system and secure plan for monumental tree during conducting construction), price bill of quantities and terms of reference; I was main landscape architect, author of landscape conception, author of whole project of landscape development, author of project description and author of terms of reference, supervision inspector;
ARLAN Landscape Architects got references for this.



ARLAN /
selected projects /

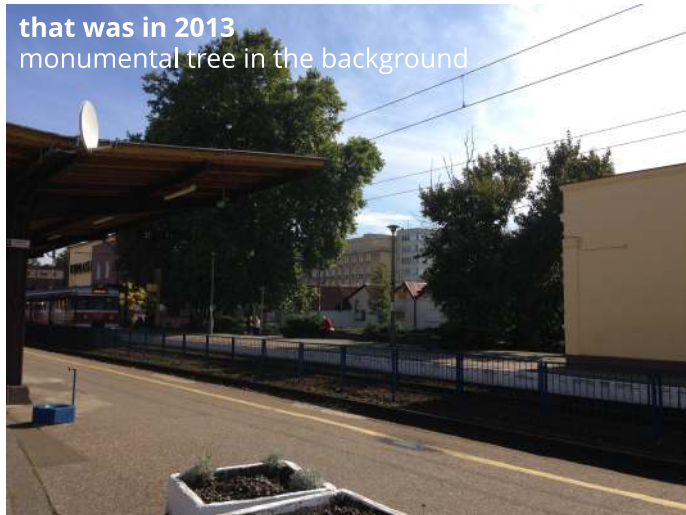
/ **Central Railway Station in Bydgoszcz City**
/ Poland



that was in 2013
monumental tree in the background



that was in 2013



that was in 2013
monumental tree in the background



that was in 2013
clearly visible monumental tree



and after realization
new form by Jarek Malecki



and after realization
clearly visible monumental tree



and after realization
new form by Jarek Malecki



and it's today
new form by Jarek Malecki

ARLAN /
selected projects /

/ **Bawa Gor Gor Park in Kirkuk City** / IRAQ

project of park on the desert in Kirkuk City / total capital budget 14 million EUR / realization 2009-2011

ARLAN Landscape Architects was General Contractor; the project was made on behalf of the Governor of Kirkuk Province;

Jarek Malecki was chief of the team responsible for whole project of 12 hectares park in Kirkuk City including levelling project, landscape development and all needed industry projects (infrastructure); Jarek was main landscape architect, author of landscape conception, levelling conception, supervision inspector of first part of works (levelling); ARLAN Landscape Architects received help from US Army Provincial Reconstruction Team and US Air Force (photos from helicopters).



ARLAN /
selected projects /

/ **Bawa Gor Gor Park in Kirkuk City / IRAQ**



measurements in the field / 2008



measurements in the field / 2008



measurements in the field / 2008



Meeting at Governor of Kirkuk Province office / 2009

Jarek Malecki



Meeting at Governor of Kirkuk Province office / 2009

Jarek Malecki



In the construction office, Kirkuk

Jarek Malecki



leveling of the park area / 2009
photo by US Air Force



leveling of the park area / 2009
photo by US Air Force



leveling of the park area / 2009



leveling of the park area / 2009



park under construction / 2009-2011



park under construction / 2009-2011



park under construction / 2009-2011



close to the finish / 2011



technical acceptance by Governor / 2011

ARLAN /
selected projects /



/ Historic park in Kikol Community / Poland

partial project of revalorization of the historic park / constant supervision / realization 2005-2006

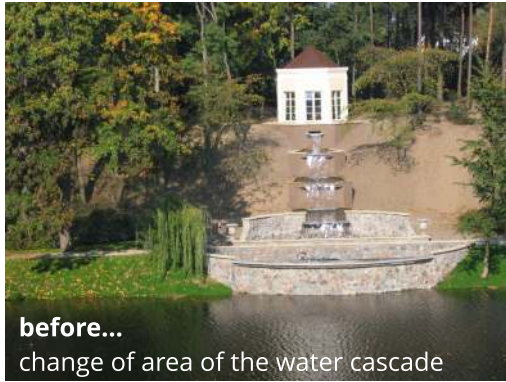
ARLAN Landscape Architects delivered a lot of big trees and shrubs to plant in the park;

Jarek Malecki was the only one collaborator of John Brookes, responsible for detailed design in whole 12 hectares park for two years, including land forming, plants assortment, providing paths nad much more; Jarek was main supervision inspector; all plants to the park were imported from our partner in Germany (Lorberg Baumschulerzeugnisse GmbH); The cooperation John Brookes and Jarek Malecki lasted two years. Jarek got references from John for this cooperation (look at the next page).



ARLAN /
selected projects /

/ **Historic park in Kikol Community / Poland**



JOHN BROOKES LANDSCAPE DESIGN

Clock House, Denmans, Fontwell, West Sussex BN18 0SU Tel: (01243) 542808 Fax: (01243) 544064

Jarek Malecki

During 2005 and 2006 Jarek Malecki built and installed landscape work for me at Kikol Park, Poland. Or rather he worked to my plans for our mutual client.

His work was excellent, and neither our client or myself could fault him. For myself he had the added bonus of being able to speak English with me, making life a lot easier.

John Brookes MBE
Landscape Designer

John Brookes Limited, Company No.2990425, Registered in England
Directors: John Brookes MBE, D. U. Essex, FSGD, Michael J. Neave ABIM.

Website: www.denmans-garden.co.uk Email: denmans@denmans-garden.co.uk



ARLAN /
selected projects /



/ Historic park in Przydatki, Brodnica Community / Poland

project of revalorization of the historic park / constant supervision / realization 1999-2014

ARLAN Landscape Architects was General Contractor and trees & shrubs supplier;

Jarek Malecki was main landscape architect, author of whole revitalisation project for 3 hectares park (including paths system, plants assortment, items of equipment, irrigation system, lighting system, secure plan for monumental tree); Jarek was supervision inspector for care of all trees in the park, providing paths, park infrastructure and much more; Most of plants were imported from our partner in Germany (Lorberg Baumchulerzeugnisse GmbH); until today we work for this Customer, private owner of this park;



ARLAN /
selected projects /

very early visualization



very early visualization



after realization

/ **Historic park in Przydatki, Brodnica Community** / Poland



that was in 1999



specialized care works on trees in park 2000



that was in 2004 - palace after revitalization



that was in 2004 - the beginning of delineating park roads



before plant of buxus low hedges 2005



Buxus low hedges, few years later

ARLAN /
selected projects /



/ **Biggest trees planted in UNESCO Historic Center of Torun City** / Poland
trees selection in nursery in Germany / supervision over planting / realization 2008

ARLAN Landscapes Architects was General Contractor and big trees supplier;

Jarek Malecki was responsible for whole operation including selection trees in German nursery, import of both 12 meters high *Platanus acerifolia* to Torun (Poland) and planting trees using *Platipus system* to anchor trees root balls; Trees were imported from our partner in Germany, Lorberg Baumchulerzeugnisse GmbH; ARLAN Landscape Architects got references for this; also, for this same Customer (Torun Pacific, Nestle Corp.) ARLAN delivered trees and shrubs in 2004-2009;



ARLAN /
selected projects /

/ **Biggest trees planted in UNESCO Historic Center of Torun City / Poland**



ARLAN /
selected projects /

1st prize in the competition Gardens of Torun, edition 2015

1st prize in the competition Gardens of Torun, edition 2014



/ Hotel 1231 in UNESCO Historic Center of Torun City / Poland

total rebuilding space in UNESCO area of Torun City / project & realization 2007-2008

ARLAN Landscape Architects was General Contractor of the project & realization;

Jarek Malecki was main landscape architect, chief of the team, responsible for whole project of rebuilding this space and project execution; Jarek was author of landscape development, plants assortment, stone paths, whole supervision; All documentation required a reconciliation with the voivodeship provincial conservation officer in Torun; All plants were imported from our partner in Germany (Lorberg Baumchulerzeugnisse GmbH); ARLAN Landscape Architects got references for this;



ARLAN /
selected projects /

1st prize in the competition Gardens of Torun, edition 2015
1st prize in the competition Gardens of Torun, edition 2014

/ Hotel 1231 in UNESCO Historic Center of Torun City / Poland



ARLAN /
selected projects /

/ **Central Bus Station in Torun City** / Poland
new land development / project & realization 2007

ARLAN Landscape Architects was General Contractor of the project & realization;

Jarek Malecki was chief of the project and executing team, responsible for whole project and executing;
Jarek was responsible for all needed earthworks and leveling, planting; ARLAN Landscape Architects got references for this;



ARLAN /
selected projects /



/ **Central Bus Station in Torun City** / Poland



ARLAN /
selected projects /



/ APART limited new headquarters near by Poznan City / Poland
new land development / project & realization 2005-2007

ARLAN Landscape Architects was General Contractor of the project & realization;

Jarek Malecki was chief of the project and executing team, responsible for whole project and executing process, including land forming (leveling), whole earthworks, planting, irrigation system (whole area 0.6 hectares; All plants were imported from our partner in Germany (Lorberg Baumschulerzeugnisse GmbH); ARLAN Landscape Architects got references for this;



ARLAN /
selected projects /

/ APART limited new headquarters near by Poznan City / Poland



We offer comprehensive design, project management and project management from the beginning to the end of its implementation in the field.

What we offer of the **design** is: concepts, projects, documentation projects of the development of public areas, commercial and private areas including among others greenery projects, interdisciplinary projects including: communication, infrastructure, terrain modeling, greenery, etc. Also: inventory of existing greenery areas, including greenery in the historic areas, degraded areas with formal and legal aspects, projects connected with the management of the trees (with the assessment of the biological condition of trees and shrubs) including the monuments of nature, restoration projects of historic parks & gardens with the consent of the appropriate regional or provincial conservation officer and landscape analysis for emerging objects and extensions of the objects.

In the field of **project service** we offer: consultations, analysis, additional studies not covered by the concept, design or documentation in the time of the investment planning, making necessary changes - in the made concepts, projects, documentation - resulting from external circumstances (not previously provided), reduction or extension of the concept, design or documentation according to the changes in the investment planning.

Within **project management** we help in the selection of suppliers, contractors, own supervisions, investor's supervisions, consultations related to the implementation of the investment directing the building of objects of the landscape architecture, managing the implementation process monitoring the implementation process

...and much more!

/ we exist since 1998.

experts
in landscape architecture



tel: +48 510 200 110
email: arlan@arlan.pl
11 Wypoczynkowa street
PL87-100 Torun, Poland

www.arlan.pl